

Cardiology Research and Practice  
Volume 2019 (2019), Article ID 4836948, 5 pages  
<https://doi.org/10.1155/2019/4836948>

*Research Article*

**Hypereosinophilic Syndrome, Cardiomyopathies,  
and Sudden Cardiac Death in Superinvasive  
Opisthorchiasis**

**Vitaly G. Bychkov,<sup>1</sup> Vladimir M.  
Zolotukhin,<sup>2</sup> Elena D. Khadieva,<sup>3</sup> Svetlana V.  
Kulikova,<sup>1</sup> Ivan M. Petrov,<sup>1</sup> Svetlana G.  
Berdinskih,<sup>4</sup> Semen D. Lazarev,<sup>1</sup> Lola F.  
Morozova,<sup>5</sup> and Evgeny N. Morozov<sup>5,6</sup>**

<sup>1</sup>*Tyumen State Medical University, Tyumen, Russia*

<sup>2</sup>*Pathology Bureau, Clinical Center “Medical City”, Tyumen, Russia*

<sup>3</sup>*Khanty-Mansiysk State Medical Academy, Khanty-Mansiysk, Russia*

<sup>4</sup>*Tyumen Cardiology Research Center, Tomsk National Research Medical  
Center, Tyumen, Russia*

<sup>5</sup>*Sechenov University, Moscow, Russia*

<sup>6</sup>*Russian Medical Academy of Continuing Professional Education, Moscow,  
Russia*

Correspondence should be addressed to Evgeny N. Morozov;  
[emorozov@mail.ru](mailto:emorozov@mail.ru)

Received 31 December 2018; Accepted 1 April 2019; Published 9 May 2019

Academic Editor: Robert Chen

Copyright © 2019 Vitaly G. Bychkov et al. This is an open access article distributed under the Creative Commons Attribution License, which permits unrestricted use, distribution, and reproduction in any medium, provided the original work is properly cited.

**Abstract.** Cardiovascular pathology in patients with superinvasive opisthorchiasis is characterized by severe changes in haemodynamics and myocardial metabolism, impaired automatism, excitability, and conduction of the heart muscle. An analysis of 578 cases (medical and outpatient records and reports of pathoanatomical and forensic autopsies) recorded in healthcare facilities treating opisthorchiasis patients with a hyperendemic focus was carried out. We identified a set of cardiac changes in patients with hypereosinophilic syndrome associated with superinvasive opisthorchiasis infection, classified the pathological processes in accordance with ICD-10, and described their pathogenesis.

## 1. Introduction

Cardiovascular pathology in patients with superinvasive opisthorchiasis (SO) is characterized by severe changes in haemodynamics and myocardial metabolism, impaired automatism, excitability, and conduction of the heart muscle. Significant, direct correlations between pain syndrome incidence and the duration of invasion, the frequency of re-infections, and stress fluctuations of the host have been found [1–3].

Hypereosinophilia is a pathological condition resulting from hypereosinophilic syndrome (HES), in which the number of eosinophilic leukocytes in peripheral blood is greater than 15% ( $1.5 \times 10^9/L$ ) [3–5]. Hypereosinophilic syndrome (as an episode) is observed in all patients with opisthorchiasis with multiple re-infections and an invasion period >15 years [3].

The most detailed description of the myocardial state in different types of HES in SO was achieved by physicians, who revealed the development of severe forms of myocarditis and described cases of sudden cardiac death (SCD) in patients with SO-associated myocarditis [6, 7]. In a study of opisthorchiasis patients with a hyperendemic focus (Khanty-Mansiysk Autonomous District), the prevalence of nonviolent, sudden death in people with noncoronarogenic heart disease increased. The mechanisms of cardiac reconstruction in SO have been studied insufficiently [8]; therefore, an understanding of cardiovascular pathology in opisthorchiasis is still urgent and requires further study.

Currently, HES as the focus of opisthorchiasis is less common; however, HES as a complication of SO is underrepresented in the literature. There is a need to look for other risk factors for SCD and to develop measures for the primary prevention of cardiac death in patients with tissue helminthiasis.

## **2. Materials and Methods**

An analysis of 578 cases (medical and outpatient records and reports of pathoanatomical and forensic autopsies) recorded in healthcare facilities treating opisthorchiasis patients with a hyperendemic focus was carried out. The average age of patients was  $49.7 \pm 3.4$  years, and the average age of those who died was  $52.3 \pm 2.9$  years. Males ( $n = 217$ ) and females 36 were included, with a female to male ratio of 1.6 : 1. A total of 110 hearts as well as livers (Figures 1 and 2) from deceased patients were subjected to morphological study, including hearts from those with sudden cardiac death . The preparations were stained with haematoxylin and eosin and van Gieson's stain using the Selye and Slinchenko methods. The degree of cellular infiltration and sclerotic processes was recorded by determining the index of the area occupied by cellular elements and fibrous structures (%), as well as their proportion in the composition of infiltrates. The stained preparations were subjected to light-optical analysis, and the images of histological preparations, taken with a microscope and Canon EOS 5D digital camera, were saved on a computer. Using the UTHSCSA Image Tool

for Windows 3.0 program, the area of metabolic myocardial necrosis was determined. Mathematical and statistical processing of the data was performed on a personal computer using Statistica 6.1 software (Statsoft®).



**Figure 1:** Superinvasive opisthorchiasis (SO). *Opisthorchis felineus* in the different stages of the ontogenesis by haematoxylin and eosin (HE) staining (magnification 400x).

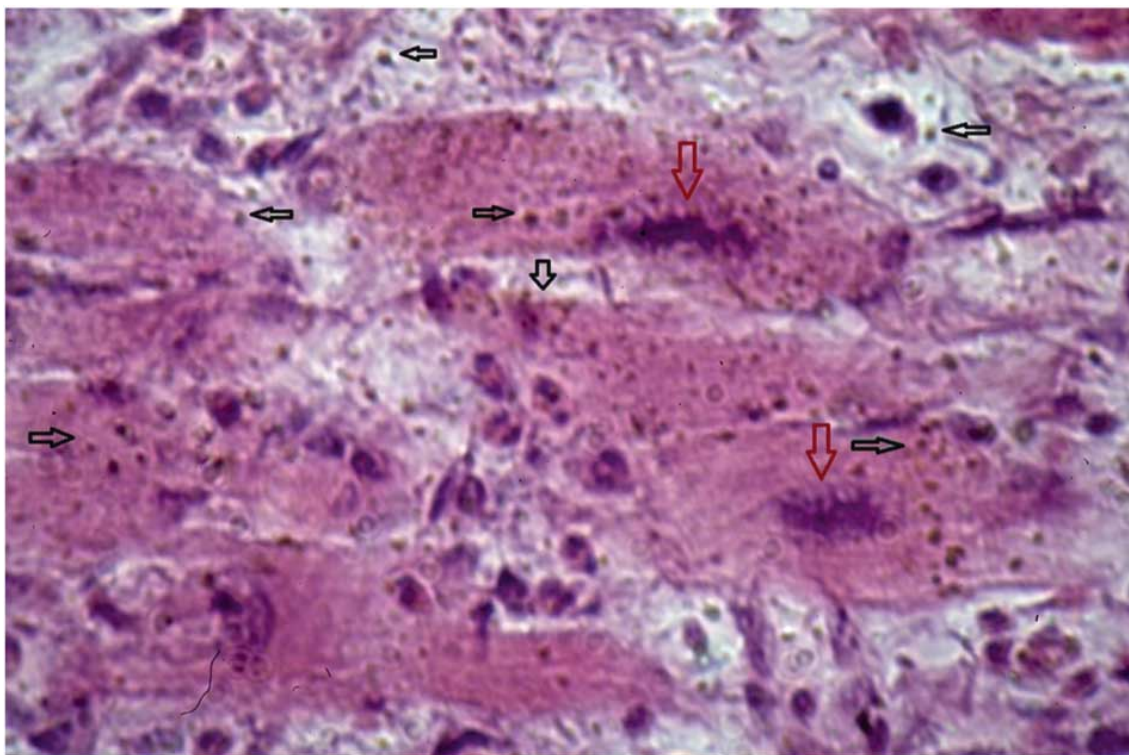


**Figure 2:** Oral sucker of *Opisthorchis felineus* by scanning electron microscopy.

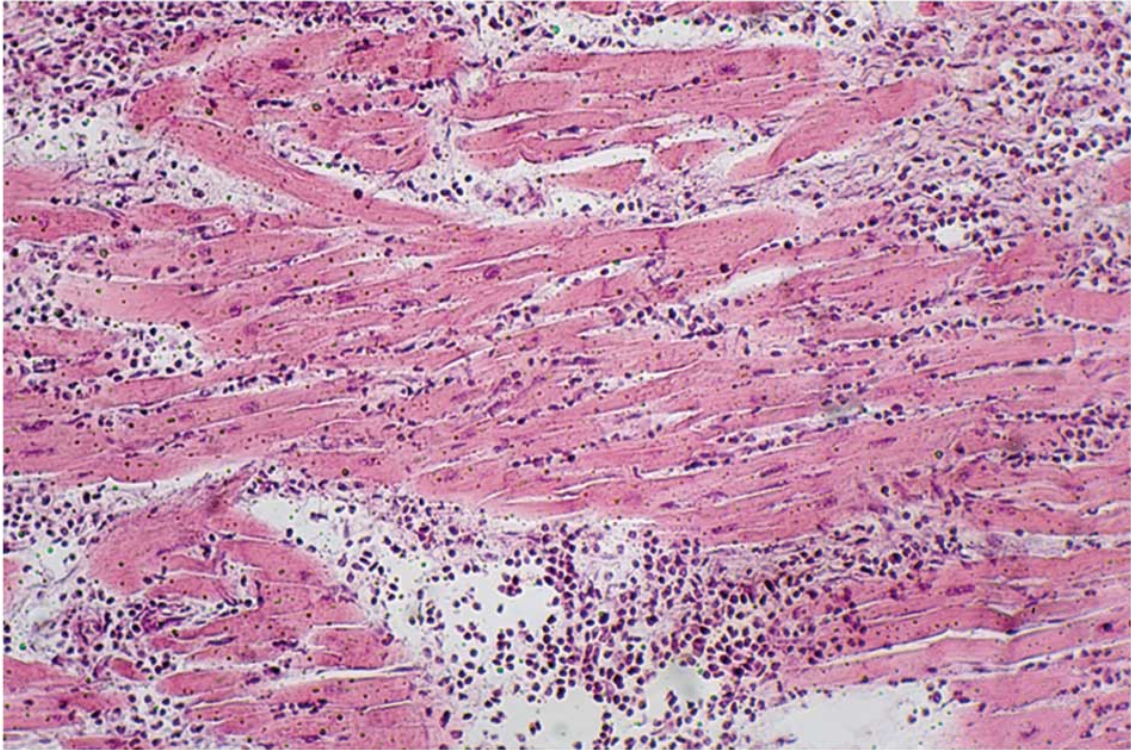
### **3. Results and Discussion**

Cardiac pain (52.42%), rhythm disturbance (72.31%), palpitation (28.20%), and expansion of cardiac borders to the left (44.29%) were the most common pathologies in patients with SO; ECG changes were detected in 26.47% of patients, and mitral valve prolapse was detected in 1/3 of the individuals examined. Microscopic examination of those who died from accidental causes and complications associated with SO revealed the following changes in heart membranes: fuchsinophilic dystrophy of cardiomyocytes and their apoptosis with no leukocyte environment around the dead elements and diffuse cardiosclerosis. These changes are attributed to the group of lesions associated with hypoxia due to Botkin syndrome, i.e., systematic, short vasospasm of the heart vessels.

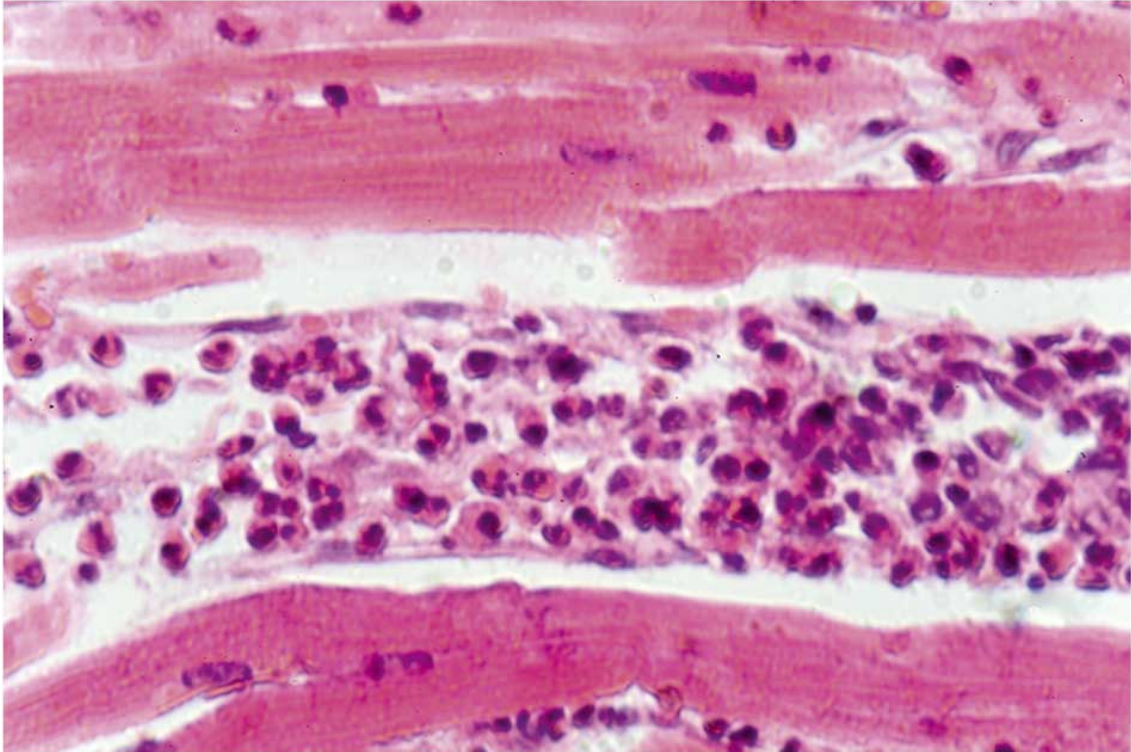
The most pronounced pathology observed in eosinophilic myocarditis was the scattering and contamination of cardiomyocytes with opisthorchis exometabolites. Subsequently, an aggression of eosinophilic leukocytes followed by myocardial cell death led to the formation of extensive foci of deparenchymatization of the muscle membrane and perivascular, cystoid, and diffuse cardiosclerosis. The direction of collagen fibres coincided with the parasite's exometabolite dispersal (Figures 3–6). In some areas of the myocardium, there were foci of cell death induced by metabolic disorders (metabolic necrosis with no signs of inflammation) (Figure 7). The cellular composition of myocardial infiltrates in HES and sudden death associated with HES is presented in Table 1.



**Figure 3:** Eosinophilic myocarditis. Parasite's exometabolite dispersal is shown by black arrows and altered cardiomyocytes are shown by red arrows (haematoxylin and eosin (HE) staining, magnification 400x).

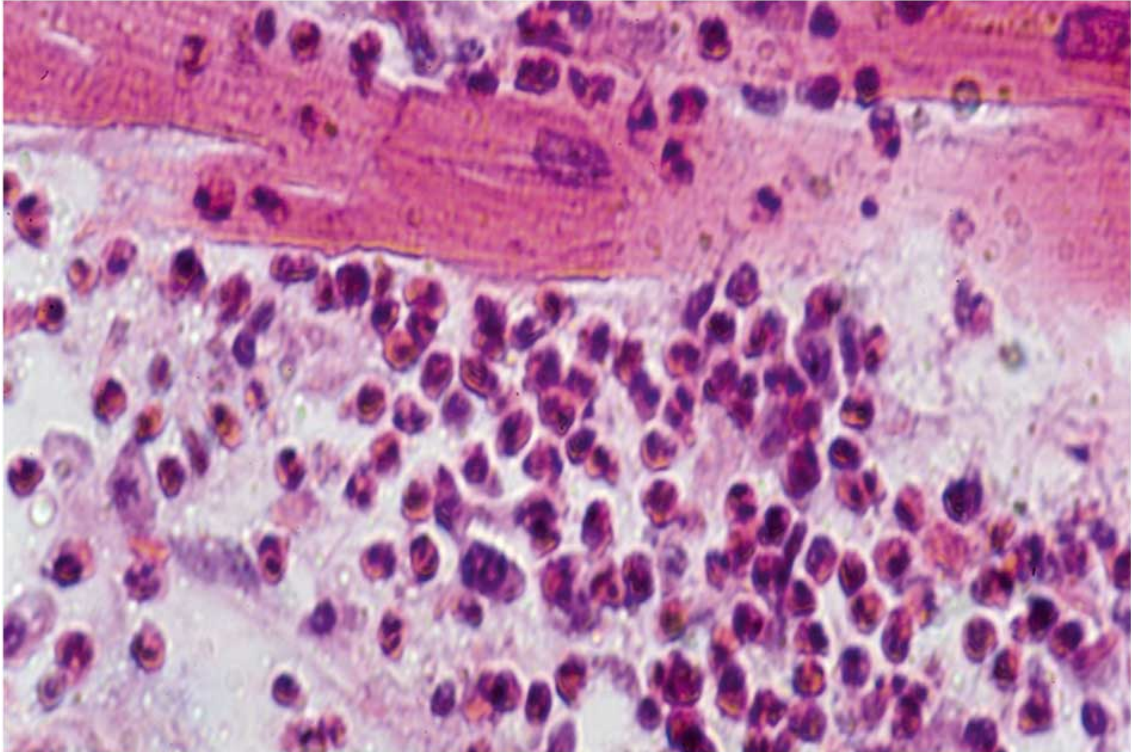


**Figure 4:** SCD, HES, and diffuse eosinophilic myocarditis were visualized with haematoxylin and eosin (HE) staining (magnification 100x).

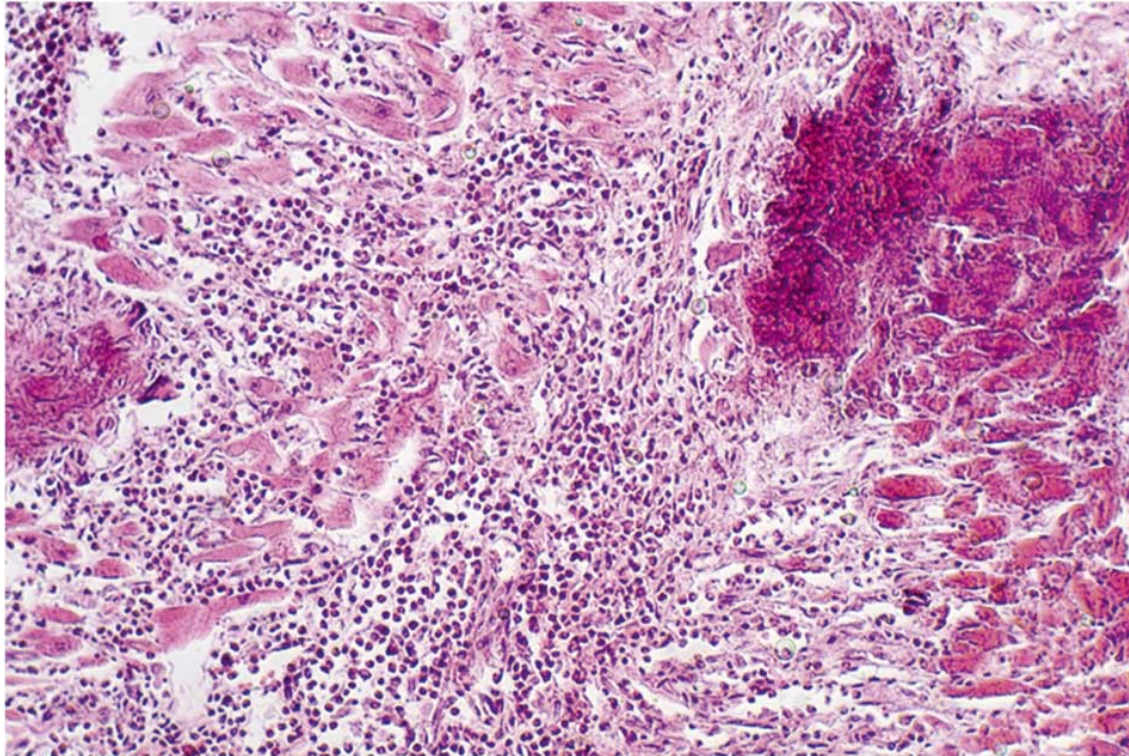


**Figure 5:** HES, diffuse eosinophilic myocarditis, intermuscular localization of granulocytes, dystrophy, and death of cardiomyocytes were visualized with haematoxylin and eosin (HE) staining (magnification 200x).





**Figure 6:** HES complicated by eosinophilic myocarditis, an aggression of granulocytes, and myolysis of cardiomyocytes were visualized with haematoxylin and eosin (HE) staining (magnification 200x).



**Figure 7:** SCD, HES, and metabolic necrosis complicated by eosinophilic myocarditis were visualized with haematoxylin and eosin (HE) staining (magnification 200x).

**Table 1:** Cellular composition of myocardial infiltrates around (*O. felineus*) metabolites in hyper eosinophilic syndrome and sudden cardiac death in patients with superinvasive opisthorchiasis.

No.	Components of infiltrates	Proportion of cells in the infiltrate, $M \pm m$ (%)	
		HES	SCD associated with HES
1	WBC	66.17 $\pm$ 5.14	88.73 $\pm$ 4.81
	Eosinophilic	76.31 $\pm$ 3.86	77.28 $\pm$ 2.84

	Lymphocytes	8.34 ± 3.44	7.10 ± 2.08
	Neutrophilic	10.63 ± 2.68	12.12 ± 3.16
	Monocytes	3.24 ± 0.83	3.00 ± 0.72
	Basophilic	1.48 ± 0.01	0.50 ± 0.06
2	Endotheliocytes	8.66 ± 2.68	3.14 ± 1.22
3	Fibroblasts	7.47 ± 3.01	3.05 ± 2.82
4	Fibrocytes	10.14 ± 1.94	0.84 ± 0.08
5	Macrophages	5.19 ± 2.63	4.08 ± 1.83
6	Plasmocytes	2.37 ± 0.94	0.16 ± 0.04

---

In the definitive stage of eosinophilic leukocyte aggression, fragments of nuclei, cytoplasm, and cytolemma were observed, suggesting the “suicide” of eosinophils during contact with antigens (*O. felineus* metabolites and contaminated cardiomyocytes), which is denoted as EETs (eosinophil extracellular traps). The mechanism is similar to that of NETs (neutrophil extracellular traps), in which leukocytes (neutrophilic and/or eosinophilic) release a meshwork of DNA fibres and granule proteins.

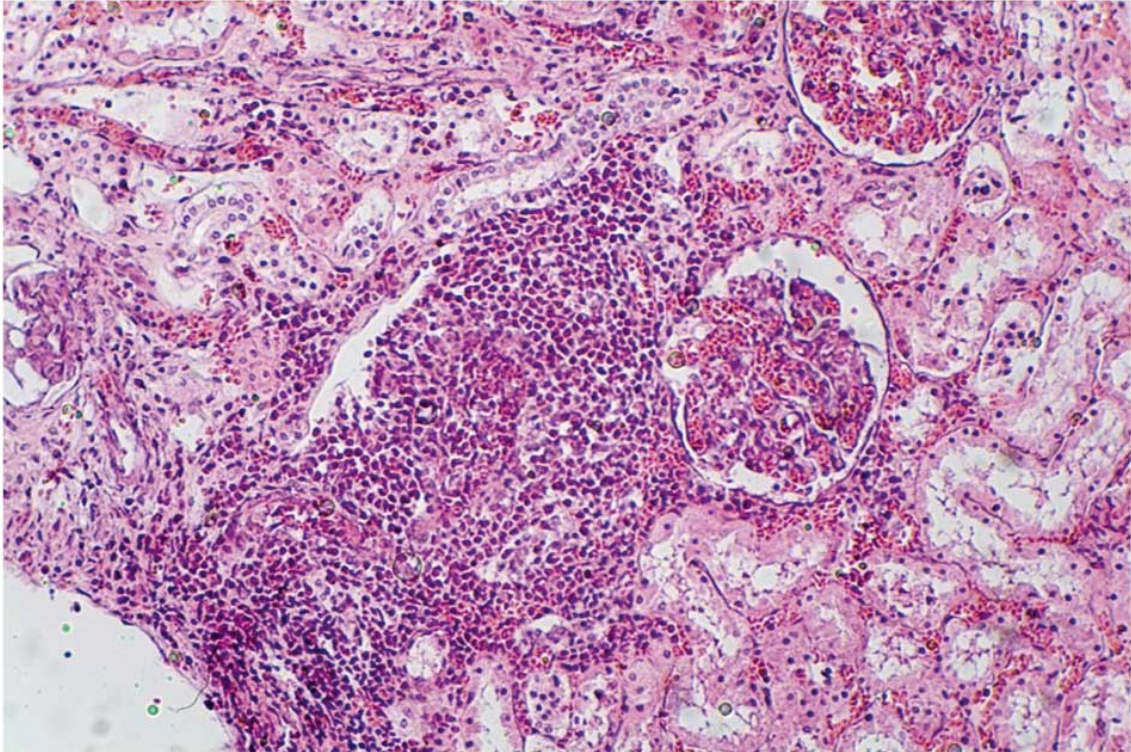
Statistical processing of the data on infiltrate cellular composition showed a significant increase in leukocytes and a decrease in endotheliocytes (angiogenesis depression), fibroblasts, and fibrocytes (lack of motivation to substitute damaged myocardial sites) in SCD associated with HES patients compared to that in those who died by violence in combination with HES  $p < 0.05$ . Moreover, in HES, with the development of sudden cardiac death, a significant increase in the area of metabolic myocardial necrosis was observed.

Sudden cardiac death (SCD) is a topical health issue in Russia and abroad. The most frequent (more than 80%) cause of sudden cardiac death is coronary heart disease, while ventricular fibrillation (including reperfusion) [9] plays a key role in the mechanism of thanatogenesis [5, 10]. Cardiomyopathies cause sudden cardiac death in 8.5% of cases, and 71.4% of these cases are alcohol-related cardiomyopathies [10]. In a population of opisthorchiasis patients with a hyperendemic foci, coronarogenic sudden

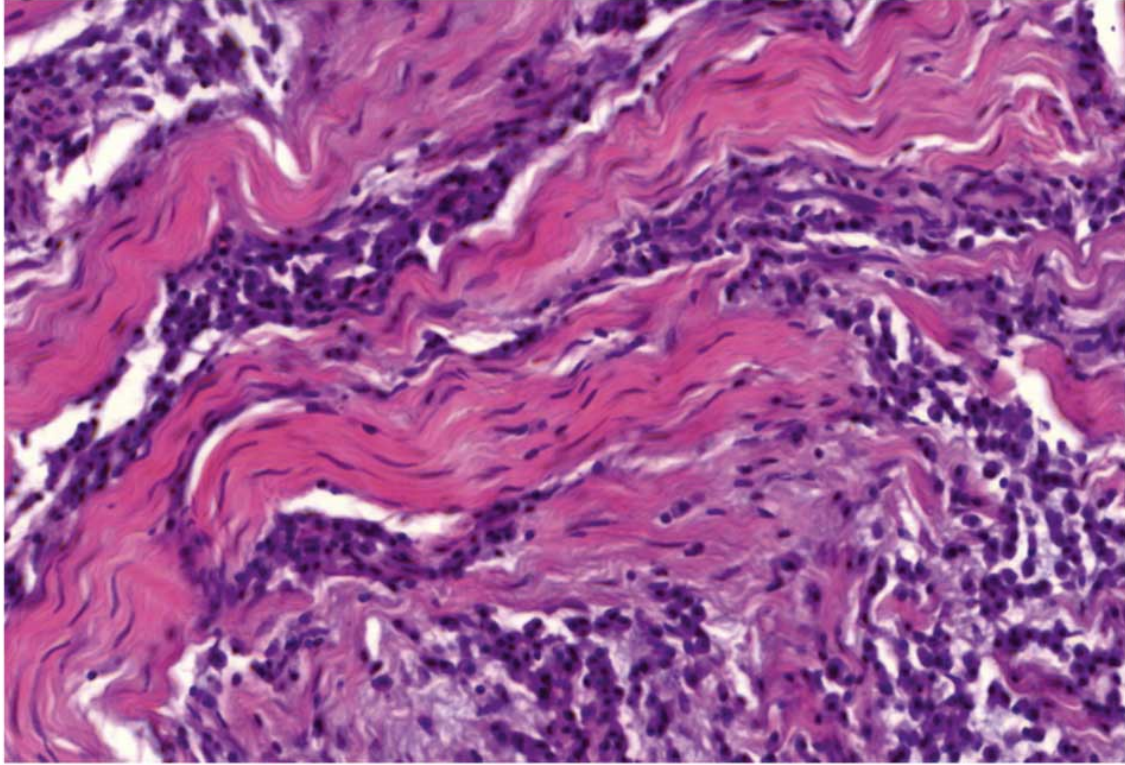
cardiac death is less common; however, cardiomyopathies (inflammatory and noninflammatory) caused by HES, complicated by eosinophilic myocarditis, account for 19%, according to our data, as well as for over 17% according to other authors [11].

Thus, pathological changes in the heart in SO are explained by coronary blood supply disturbances of a reflex type similar to those of Botkin syndrome. These changes were accompanied by paroxysmal cardialgia, resulting in diffuse cardiosclerosis. Cholecystocoronary syndrome was most prominent in patients with various forms of cholecystitis (chronic SO complication).

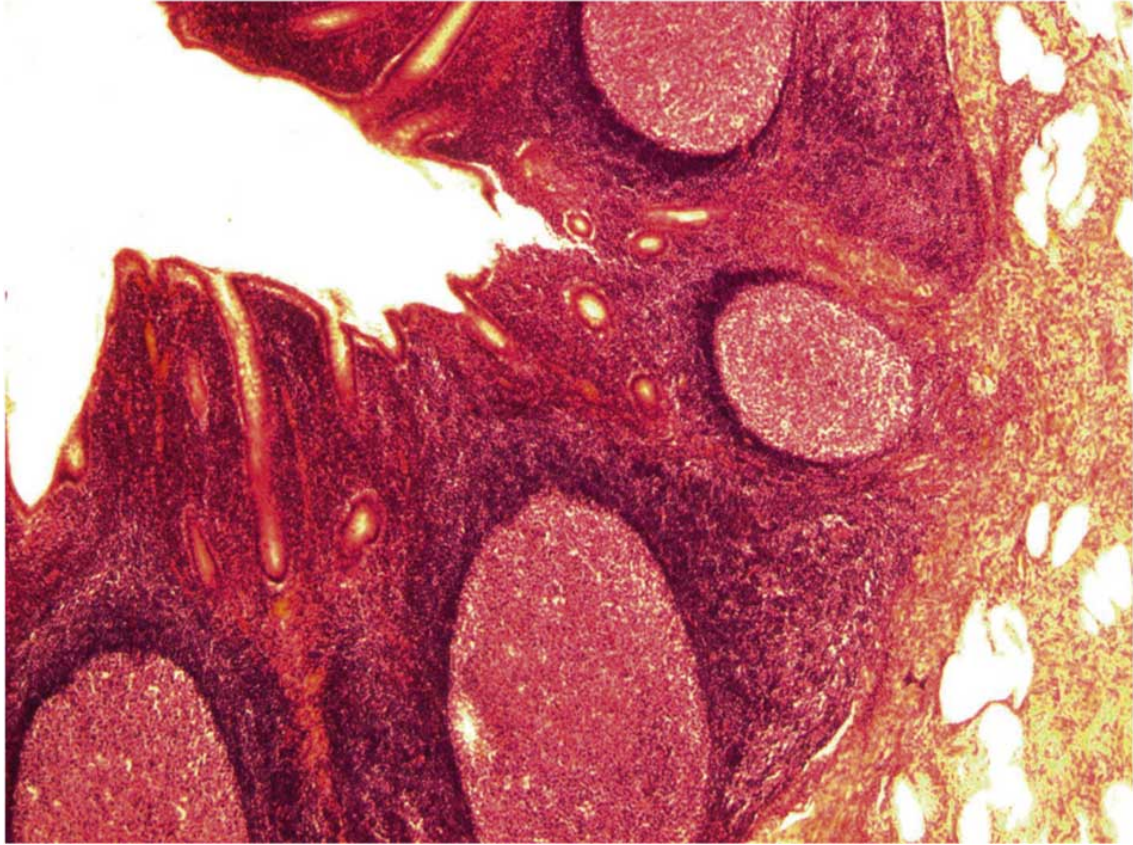
Eosinophilic infiltrates in HES are consistently found in the kidneys (Figure 8), gums (Figure 9), and mucosae of the small and large intestines. In addition, pronounced hyperplasia of lymphoid cells with the expansion of reactive foci of lymphoid follicles is observed along the entire length of the entodermal canal (Figure 10). Depositions of *O. felineus* exometabolites are found in all organs, including the intestines, lungs, skin, and gums. Clinical signs of HES depend on the localization (target organs) of eosinophilic leukocytes and *O. felineus* metabolites; thus, they can either manifest as general, nonspecific reactions, or, for example, if the appendix is affected, the symptoms of acute appendicitis are evident, while infiltration in the kidneys is accompanied only by pain and does not result in organ insufficiency. Thanatogenetic mechanisms of sudden cardiac death in HES involve the development of ventricular fibrillation. Another mechanism of SCD, thromboembolic syndrome due to a parietal thrombus in the setting of eosinophilic pancarditis, was observed in one case.



**Figure 8:** HES and eosinophilic infiltrates in the kidneys were visualized with haematoxylin and eosin (HE) staining (magnification 200x).



**Figure 9:** SCD, HES, and diffuse eosinophilic infiltrates in the gums were visualized with haematoxylin and eosin (HE) staining (magnification 200x).



**Figure 10:** HES and hyperplasia of lymphoid cells in the appendix were visualized with haematoxylin and eosin (HE) staining (magnification 200x).

Hypereosinophilic syndrome in SO is caused by opisthorchis exometabolites that contaminate cardiomyocytes; the latter subsequently becomes autoantigens and targets for eosinophilic leukocytes. In addition to the cellular immune response mentioned above, there is a humoral component (antibodies to myocardium  $\alpha$ -myosin) [12].

Blood hypereosinophilia in opisthorchiasis correlates with tissue hypereosinophilia. A high level of IL-5 and hyperproduction of IgE and IgG are involved in the mechanisms of hypereosinophilia [12].

Prevention of SO complications involves the exclusion of primary and recurrent infections, elimination of chronic inflammation, and/or surgeries

in cases of gallbladder inflammation. These measures, along with cholecystectomy, also prevent choleperitonitis. Antiparasitic therapy plays a key role in the prevention of heart pathologies and sudden cardiac death. Dehelminthization should be conducted during the chronic phase of the disease. Antiparasitic drugs used in the acute phase and at the peak of HES are complicated by increased eosinophilia, including tissue infiltration, the exacerbation of eosinophilic myocarditis, and vasculitis, thus aggravating SCD. Blood tests and autopsy material analyses showed that even with eosinophilia in over 10% of all white blood cells, dehelminthization caused an increase in eosinophils by 123%–185%, with the development of tissue eosinophilia and eosinophilic myocarditis. Treatment of patients with HES (Loffler's syndrome), which is consistently encountered in SO, is rather challenging and requires an individualized approach.

## **4. Conclusion**

In superinvasive opisthorchiasis, hypereosinophilic syndrome should be referred to as a symptomatic HES, in which eosinophilia refers to a reactive, nonclonal, unlimited impairment of target organs with an infectious parasitic agent. Heart diseases in superinvasive opisthorchiasis should be attributed to secondary cardiomyopathies characterized as dilated, noninflammatory (degeneration of cardiomyocytes, cardiosclerosis), and metabolic (metabolic necrosis). Inflammatory cardiomyopathies develop with HES and eosinophilic myocarditis, which, in turn, are induced by the contamination of cardiomyocytes by opisthorchis metabolites, turning them into target cells for antigens. Similar mechanisms for alteration, exudative, and proliferative processes in the heart are observed in other helminthic infections [12–14].

## **Data Availability**



All data underlying the findings described in the manuscript are fully available without restriction. All relevant data are within the manuscript.

## Conflicts of Interest

The authors declare that they have no conflicts of interest.

## References

1. S. Kulikova, E. Khadieva, S. Orlov, O. Solovyova, V. Zolotukhin, and V. Bychkov, "Heart involvement in superinvasive opisthorchiasis," *Medical Science and Education of the Urals*, vol. 1, pp. 66–68, 2011.
2. V. G. Bychkov, V. M. Zolotuchin, and A. L. Suchkov, "Cardial pathology in opisthorchiasis," in *Proceedings of the 18th International Congress of Parasitology*, p. 396, Izmir, Turkey, August 1994.
3. V. A. Drozdov, A. V. Doronin, V. A. Ivanova, and I. V. Grebennikova, "Myocardial damage in patients with opisthorchiasis," in *The Current State of the Problem of Opisthorchiasis*, T. V. Peradze, Ed., p. 123, Pasteur Institute of Epidemiology and Microbiology, Leningrad, Russia, 1981.
4. A. P. Avtsyn, I. A. Kazantseva, O. B. Minsker, and P. V. Chumachenko, "Visceral candidiasis in conjunction with "marked eosinophilia" in acute opisthorchiasis," *Arkhiv Patologii*, vol. 50, no. 11, pp. 73–76, 1988.
5. L. A. Bokeria, O. L. Bokeria, and L. M. Kirtbaya, "Cardiac failure and sudden cardiac death," *Annaly Aritmologii*, vol. 4, no. 6, pp. 7–20, 2009.
6. V. G. Bychkov, O. A. Molokova, and V. P. Zuevskii, "Granulomatous inflammation of the liver in opisthorchiasis," *Arkhiv Patologii*, vol. 49, no. 3, pp. 44–48, 1987.
7. V. S. Komiakov and V. I. Iatskiv, "Case of severe infarct-like form of infectious-allergic myocarditis in a patient with acute phase of opisthorchiasis associated with chronic focal infection and lambliasis," *Terapevticheskii Arkhiv*, vol. 48, no. 5, pp. 130–132, 1976.
8. V. G. Bychkov, E. D. Khadieva, and V. M. Zolotukhin, "Structural changes in internal organs in superinvasive opisthorchiasis," in

- Proceedings of the Scientific and Practical Conference of Pathologists*, pp. 53–55, Chelyabinsk, Russia, June 2012.
9. L. V. Kaktursky, *Sudden Cardiac Death (Clinical Morphology)*, Meditsina, Moscow, Russia, 2000.
  10. O. L. Bokeria and M. B. Biniashvili, “Sudden cardiac death and ischemic heart disease,” *Annaly Aritmologii*, vol. 2, no. 10, 2013.
  11. V. G. Bychkov and S. P. Gladyshev, “Complex assessment of iatrogenic diseases,” *Arkhiv Patologii*, vol. 51, no. 6, pp. 85–87, 1989.
  12. N. N. Ozeretskova, “Organ pathology in chronic tissue-dwelling helminthic infections: role of blood and tissue eosinophilia, immunoglobulinemia E, G4, and immune response-inducing factors,” *Meditsinskaia Parazitologiya i Parazitarnye Bolezni*, vol. 4, pp. 9–14, 2000.
  13. Y. A. Berezantsev and M. Y. Obidina, “The stimulatory effect of exometabolites of the *Trichinella spiralis* larvae on the proliferation of cells in organ culture,” in *Proceedings of the 4th All-Union Conference*, Erevan, Russia, June 1985.
  14. V. A. Rykov and G. A. Kramarenko, “Case of trichinosis with lethal outcome due to consumption of brown bear meat in the Krasnoyarsk territory,” *Arkhiv Patologii*, vol. 41, no. 7, pp. 53–55, 1979.